



Headteacher: Mrs V Giliker

20<sup>th</sup> March 2020

Dear Parents and Carers,

### Emergency Child Care Arrangements

The government has released additional guidance overnight on support for vulnerable families and key workers. I have put a link below to the guidance on key worker roles along with a second link for frequently asked questions. Please read both carefully.

Please follow these overriding principles from the guidance:

1. **If at all possible, your child should stay at home**, this is a critical part of the national plan to keep transmission rates for the virus low. The guidance is clear that **every child who can be safely cared for at home should be**. There is also no requirement for parents to send their child to school if they do not wish to do so.
2. School capacity is currently very limited; if we are overwhelmed with applications, we will be forced to make difficult decisions and prioritise the needs of some over others.
3. Increasing numbers of staff in school are going to become ill over the next few weeks. The more children they are exposed to on a daily basis, the faster this will happen and the more likely we are to lose our ability to support those who need it.

**Please think very carefully if you have any other alternative before you apply for an emergency school place.** We are ready and willing to play our part and know that there are families who need our support. Those of you involved in key roles need to be able to rely on our ability to look after your children. **Please act responsibly in applying for places as it will play a key part in maintaining our ability to support you for the long term.** If you are unsure about what to do next please contact the school to discuss.

Link 1 – Key worker roles

<https://www.gov.uk/government/publications/coronavirus-covid-19-maintaining-educational-provision/guidance-for-schools-colleges-and-local-authorities-on-maintaining-educational-provision>

Link 2 – Frequently asked questions about school closure, key worker support, exams and care for vulnerable children. Please read point 1.8.

<https://www.gov.uk/government/publications/closure-of-educational-settings-information-for-parents-and-carers/closure-of-educational-settings-information-for-parents-and-carers>

If you are an eligible key worker and wish to take up a place, please contact the school on [info@harpurhill.derbyshire.sch.uk](mailto:info@harpurhill.derbyshire.sch.uk) and make sure you put **'emergency offer'** in the title. We can confirm an application only if it meets the criteria in the guidance and no other safe option for a child staying at home exists. **Please email us by 2pm today.**

The flow chart below is to help you in decision making on emergency school place offers.



We're working  
towards Artsmark  
Awarded by Arts  
Council England



Headteacher: Mrs V Giliker

In your email, please confirm all 6 of the list below:

1. your name
2. your child/children's name(s)
3. if there is no other adult family member who can support with childcare
4. your field of work – why you are a key worker (in case we need to prioritise)
5. what sessions / days you require emergency childcare for over the next 2 weeks (you may not need every day of the week nor whole days)
6. whether you will need before and after school provision and what days you will need this.

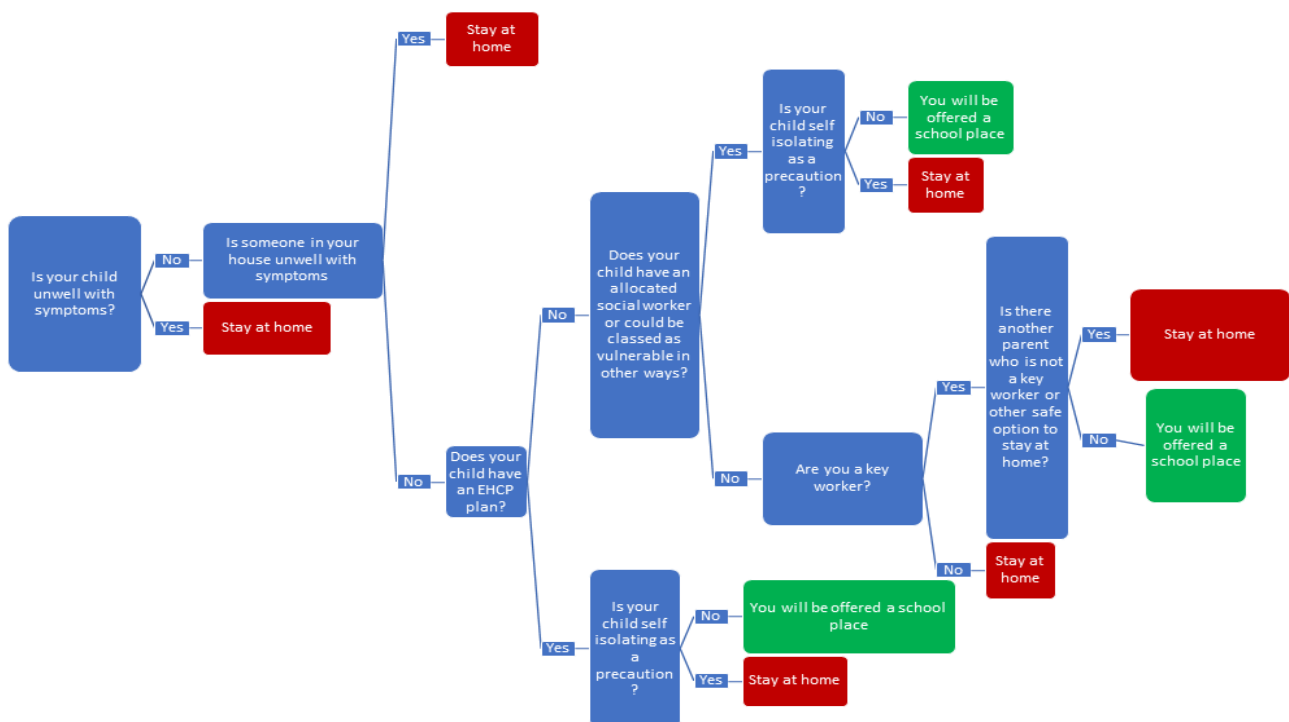
We are currently trying to establish what before and after-school provision we can offer with Playdays - so we also need to know what requirements you may have.

We can confirm an application only if it meets the criteria in the guidance and no other safe option for a child staying at home exists. We will then respond via text message by 4pm today. **All offers of school places are subject to the capacity of the school** and we may need to prioritise provision according to need should the number of staff available fall significantly. Please help us protect and maintain a valuable resource to help us keep helping those who need it most.

Thank you again for your patience and support.

Yours sincerely

Mrs V Giliker (Headteacher)





Headteacher: Mrs V Giliker



We're working  
towards Artsmark  
Awarded by Arts  
Council England



Nationally coordinated by STEMNET



Trent Avenue, Harpur Hill, Buxton, Derbyshire SK17 9LP Tel: 01298 23261  
[www.harpurhill.derbyshire.sch.uk](http://www.harpurhill.derbyshire.sch.uk) email: [info@harpurhill.derbyshire.sch.uk](mailto:info@harpurhill.derbyshire.sch.uk)